




Greetings from Arizona,

Please read this document carefully. Please be sure to have this packet printed or saved to your mobile device to help ensure a smooth check-in.

Location	Check-in/Out Time	Checkout Instructions
15221 N Clubgate Dr <b>UNIT: 2086</b> Scottsdale, AZ 85254	<b>Check-In: After 4:00 PM</b> <b>Check-Out: Before 11:00 AM</b>	Please complete your checkout form at least 24 hours before departure. Form: <a href="http://www.hazvr.com/checkout/">www.hazvr.com/checkout/</a>
 <b>ALARM ON</b> Please see last page for instructions. Note the alarm code prior to entering		
<b>Keyless Entry</b>	<b>No key is required.</b> Please enter the code (See Email) on the garage door keypad. Please enter/exit through the garage.	
<b>Parking</b>	<b>Avoid being towed at your expense. ONLY park in the garage or an uncovered visitor space.</b> Note: No parking RVs, Trailers, or larger than 8-passenger vehicles.	
<b>Telephone Use</b>	<b>Telephone accessibility or service is not guaranteed.</b> If a telephone is available, only local calls are permitted.	
<b>Starter Amenities</b>	Starter amenities such as soap, shampoo, detergent, toilet paper, paper towels, linens, glassware, cleaning supplies, etcetera <b>are not re-stocked</b> during your stay and are not intended to last the entire duration.	
<b>No Smoking</b>	<b>Smoking is strictly prohibited.</b> Please smoke outside with the windows/doors shut. Please discard cigarettes appropriately. Failure to abide will result in additional fees of up to \$2,500.	
<b>No Pets</b>	<b>The property is strictly no pets.</b> Please notify us prior to your arrival if you will be travelling with a service animal.	
<b>Quiet Hours</b> <b>State/City Law</b> <b>(Residential Use Only)</b>	<b>Quiet hours are between (9:00 PM – 8:00 AM) and are strictly enforced by the City/State.</b> No parties, production filming, events, business activity, solicitation, or illegal activity is permitted. No loud music or noises that may disturb neighbors are allowed. Please do not trespass onto other properties, climb walls, or toss items over walls. Failure to abide will result in immediate non-refundable eviction, forfeiture of all deposits, and a fine of up to \$2,500.	
<b>Max Occupancy</b>	<b>The max occupancy of the home may never be exceeded.</b> Failure to abide will result in immediate non-refundable eviction, forfeiture of deposits, and a fine of up to \$2,500.	
<b>Pool Safety</b> <b>(No Lifeguard On Duty)</b>	<i>(Applicable to homes with access to a private or community pool or spa).</i> <b>Stay Close, Be Alert, and Watch. Use at own risk.</b> Children, disabled people, elderly, intoxicated individuals, or a person who cannot swim may not be left unattended in the pool or around the pool area. Ensure that individuals who cannot swim have properly fitted floating devices at all times when around the pool area or in the pool. For more pool safety tips, please visit <a href="http://www.PoolSafely.gov">www.PoolSafely.gov</a> . <b>No glassware is permitted by or in the pool area. All posted signs must be obeyed.</b>	





## Driving Directions

For the most accurate directions, please use your preferred mapping device. Directions vary depending on which Airport terminal you arrive to.

**Community:** Kierland Greens    **Building:** 14 (LEFT)    **Unit:** 2086

**A** Phoenix Sky Harbor International Airport, 3400 E Sky Harbor Blvd, Phoenix, AZ, United States

↑	1.	Head <b>west</b> on <b>Terminal 3</b> toward E Sky Harbor Blvd	417 ft
↗	2.	Bear <b>right</b> onto <b>E Sky Harbor Blvd</b> New York Style Arizona Pizza on the corner	1.6 mi
	3.	Take the ramp for <b>I-10 W</b>	0.8 mi
	4.	At Exit <b>147A-B</b> , head on the ramp <b>right</b> and follow signs for <b>AZ-51 North / AZ-202 Loop East</b>	12.9 mi, 10 min
↑	5.	At Exit <b>12</b> , head on the ramp <b>right</b> and follow signs for <b>Greenway Rd</b> Pass Sonic Drive-In on the right in 1.0 mi	3.9 mi
↑	6.	Continue on <b>E Greenway Pkwy</b>	0.3 mi
↶	7.	Turn <b>left</b> onto <b>N Clubgate Dr</b>	26 ft
↑	8.	Road name changes to <b>N Clubgate Dr</b>	364 ft
↘	9.	Turn <b>right</b> ● <i>Gated road</i>	200 ft
↘	10.	Turn <b>right</b>	0.2 mi
	11.	Arrive at destination The last intersection before your destination is N Clubgate Dr	

**B** 6630 E Greenway Rd, Phoenix, AZ 85254, United States



## Emergency Information

In case of an emergency related to health, fire, or safety, **DIAL 911 FOR HELP.**

### Wildlife Advisory

Please be advised; you are coming to Arizona, where wildlife exists. Be cautious of scorpions, black widows, and rattlesnakes while in Arizona. If bitten, do not panic. Contact 911 or call poison control. Children and the elderly are most at risk.

### Poison Control

1 (800) 222-1222

**Helpful Tip:** Always check the inside of your shoes before putting them on.





## Community Amenities

**All community amenities are subject to additional rules set by the HOA.**

All community amenities are subject to closure, repairs, and additional rules set forth by the HOA.

All posted signs **MUST** be complied with.

**NO GLASSWARE BY THE POOL, SPA, GYM, OR COMMON AREAS. The city health inspector regularly visits and will CLOSE all the amenities if glassware is found. PLEASE FOLLOW THIS RULE.**



## Outdoor Lights

**You do not need to turn off landscape lights that are on automatic timers.**

Please turn off all outdoor lights when not in use. The neighbors will appreciate it. – Thank you!



## Exterior Dust & Leaves

**Please inquire about pricing for additionally housekeeping and or landscape services.**

Exterior dust on furniture is standard for Arizona. Dust and leaves, especially during the monsoon season, will accumulate daily. For an additional fee, you may request more landscaping and or cleaning services to sweep the property during your stay. During monsoon season, storms may occur almost every evening. **Please notify us if there is storm damage to the property.**



## TV Instructions

Each TV is a smart TV. Complimentary HULU LIVE TV is active on all TVs. If you are logged out, please contact us.

To access HULU LIVE.

1. Power ON TV and PRESS the HOME BUTTON
2. Select the HULU APP
3. Follow On-Screen Instructions





## Safety Warnings & Advisories

**Watch Your Step:** You are entering a new, unfamiliar property. It is essential to walk through the home with all the lights on and note each step inside and outside the house. Use caution when walking through the home for the first few nights until you are more familiar with the residence and layout. Exterior pavers may not be perfectly level due to moving ground. Be sure to point out all steps inside and outside to your guests and visitors in your group.

**All Floors Inside/Outside Are Slippery When Wet:** Use caution when floors are wet. Be sure to wipe up any spills inside/outside the home as soon as possible. When it rains, floors outside may be slippery – use caution.

**Fire Alarms:** Please notify us if a fire alarm battery goes out or if you believe a smoke/carbon monoxide detector is not working, and we will send a repairperson asap.

**Exterior and Interior Fireplaces:** For your safety, during your stay, fireplaces/features may be disabled. During the summer, fireplaces/fire features are disabled. NEVER leave a fireplace unattended.

**Water Safety & Rules:** Do not enter the water if it is cloudy, foul-smelling, or discolored. If you have sensitive skin, it is not advised that you use the pool/spa.

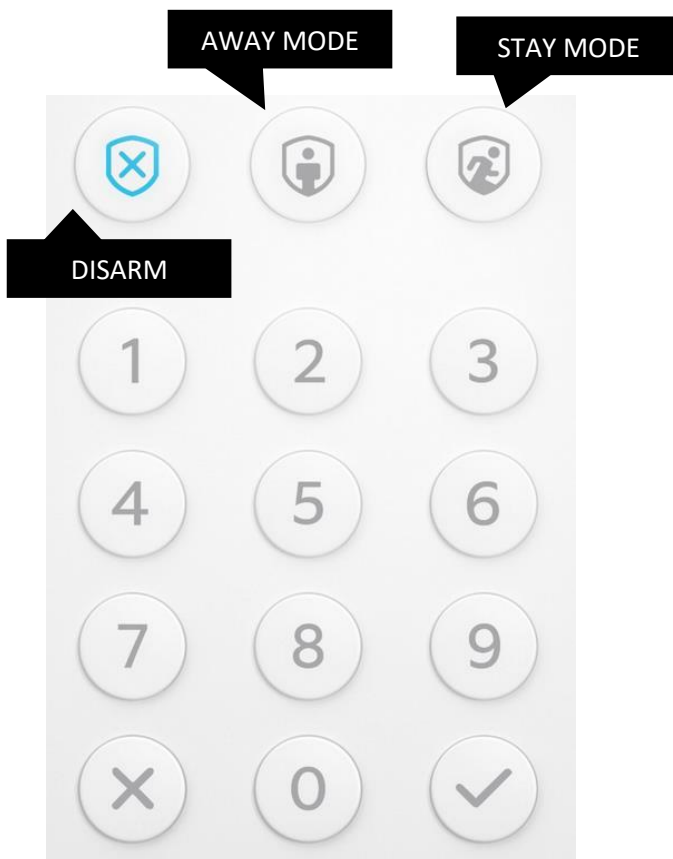
- 1. Please report any non-working child safety locks or barriers asap.**
2. Never leave children or individuals who cannot swim alone in the common area. There must be a sober supervising adult outside at all times when children or individuals who cannot swim are in the common areas. Failure to do so may result in death.
3. Children are not permitted to use the spa; please consult with a doctor before using the spa. You should not use the spa for longer than 15 minutes.
4. No diving into the pool/spa is permitted. No running around the pool/spa is allowed.
5. No glassware in or around the pool/spa is allowed.
6. Always shower before and after using the pool/spa.
7. Use the least amount of lotion/makeup as possible. Certain chemicals can change the water chemistry.
8. Do not use the pool/spa if you are sick, have a wound, or skin rash. Doing so may infect others in your group.
9. Intoxicated individuals may not use the pool/spa.
10. Please observe your children in the water and help prevent any 'accidents' from occurring in the pool. Failure to do so may result in the water becoming unsanitary.





## Alarm Instructions

**KEYPAD LOCATION:** Walk up the stairs. Immediately to your right there is a sofa table. The keypad is located there. Do not use the keypad that is located right when you enter through the garage.



1. Enter your provide code, then press the **disarm** button.
2. To activate AWAY MODE, enter your provided code, then press the AWAY MODE button.
3. To activate STAY MODE, enter your provided code, then press the STAY MODE button.

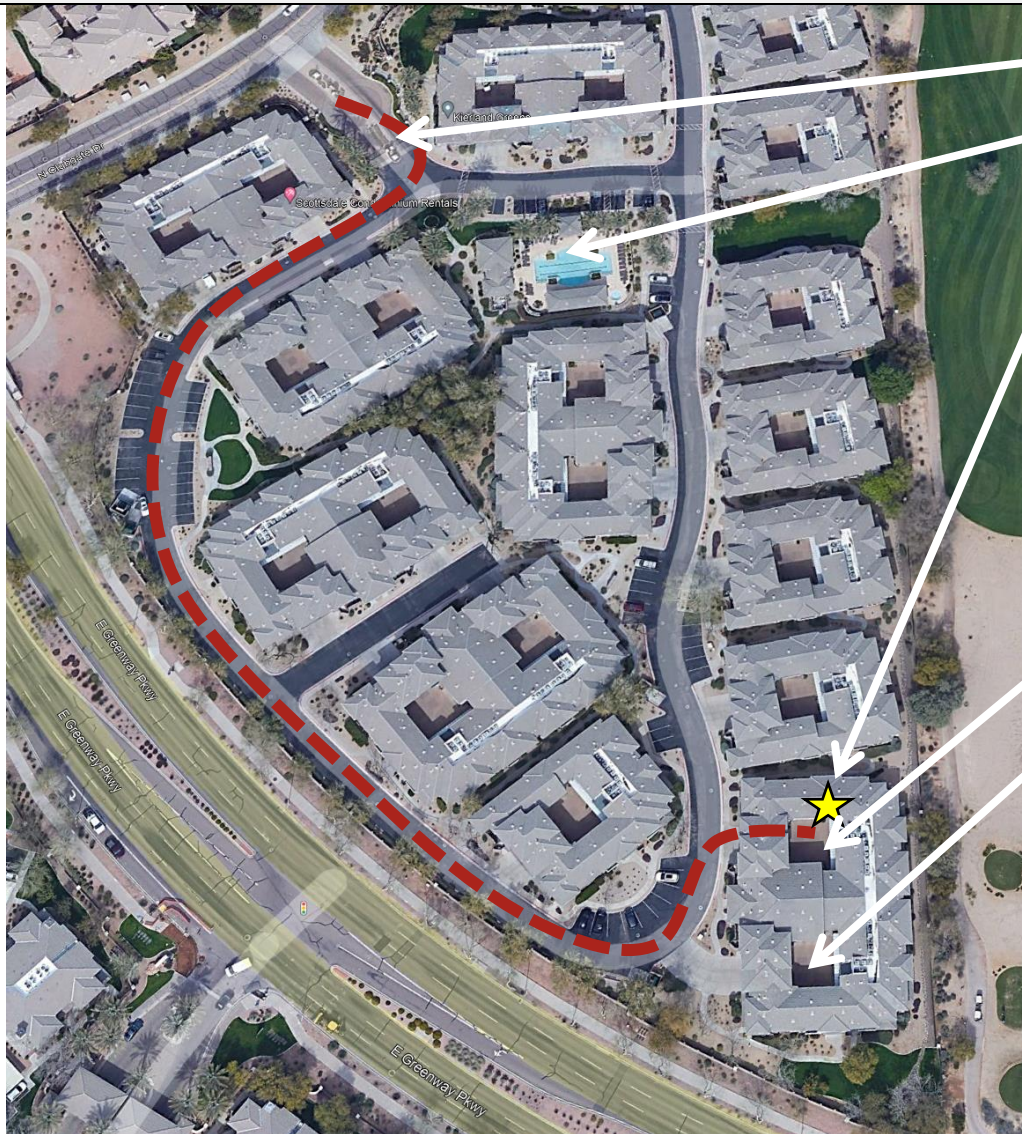
\***Away mode:** Activates the door sensors and motion sensors.

\***Stay mode:** Activates only the door sensors.





## Community Map



Main Gate

Pool/Gym

Building 14  
Use LEFT Entrance  
2086

Left Bldg 14

Right Bldg 14



You've Arrived!  
The garage keypad will be labeled 2086  
(Last Garage On Your Left).

